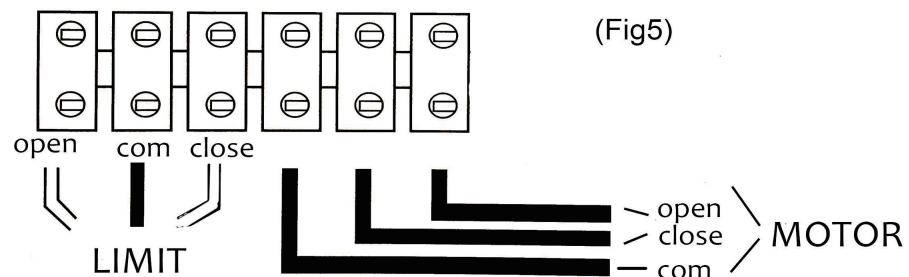


Motor wiring (Fig 5)



Trouble shooting

No	Obstacles	Cause analysis	Chear and the method
1	Motor doesn't work	<ul style="list-style-type: none"> *No power supply *Break fuse *Capacitor decay *Surpass load *Effected by the thermal protection 	<ul style="list-style-type: none"> *Check power supply *Change fuse *Change capacitor *Check if any barrier on track *Restart after 20 minutes
2	Can open (close),but can't close (open)	<ul style="list-style-type: none"> *Position of limit switch is not correct *Limit switch is damaged *Whether close /COM/open wires are connected wrong *Magnetic-steel dropped and position isn't right 	<ul style="list-style-type: none"> *Adjust position *Change limit switch *Connetc correctly according to wiring diagram *Re-adjust the position
3	Can not locate accurately	<ul style="list-style-type: none"> *Distacne of limit switch is too large *Limit switch is brocken *Whether open. COM, close were connected *Magnetic-steel's position is wrong 	<ul style="list-style-type: none"> *Adjust position fo limit switch *Change limit switch *Connect correctly according to wiring diagram *Re-adjust the position
4	Release device	<ul style="list-style-type: none"> *Operating clutch handle is broken *Worm gears are jammed 	<ul style="list-style-type: none"> *Change the handle *Rotate the pinion
5	Push the "open" button but the gate close	<ul style="list-style-type: none"> *Whether motor line U.V. W. connection error 	<ul style="list-style-type: none"> *Contnec correctly according to wiring diagram
6	Motor can turn but can not work	<ul style="list-style-type: none"> *Compression spring of clutch is dead *Gear box is released 	<ul style="list-style-type: none"> *Change the spring Couple the wirm gear

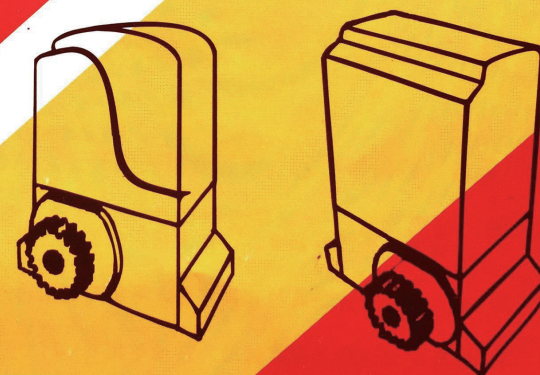
SLIDING GATE OPENERS

⇔ **Best Quality** ⇔

PURE COPPER CORE

The strongest solution for sliding gates

Product manual



Designed for residential application
Model or 500/1000/1500/1800/2000

SLIDING GATE OPENER

PREFACE

First of all, thank you for using the door opener produced by our company. In order to ensure that you are fully familiar with the various functions of the machine, please read this manual carefully, so that you can install and use it safely.

Security & Protection

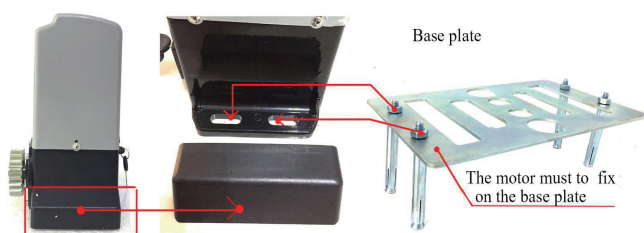
- 1、 Power supply voltage must meet the requirements, do not overvoltage or under-voltage use;
- 2、 When installing or repairing the gate, please cut off the input power first;
- 3、 Please make sure that the door opener is grounded reliably, the grounding resistance is less than $4\ \Omega$, and there are leakage and short circuit protection.
- 4、 At the proper position of the side of the door opening machine on the track, a limit iron should be firmly welded, which should be outside the range of the electric appliance limit, so that it is appropriate to block the two sides of the walking wheel and the door body does not leave the guide wheel constraint. To prevent the electrical limit failure gate from both sides of the guide wheel constraints caused by overturning;
- 5、 Before the door is opened, obstacles should be cleared; vehicles and pedestrians are strictly prohibited from passing through the gate while it is in operation.
- 6、 Avoid children playing operate remote control and control box switch;
- 7、 The motor shall not be disassembled on its own, and the maintenance shall be carried out by professional personnel.
- 8、 This machine uses high-grade lubricating grease, no need to replace or add lubricating oil.

Technical specifications

- | | |
|--|---|
| 1、 Power supply: 220V/50Hz AC | 2、 Motor power :370W/550W/750W/900W/1200W |
| 3、 Starting current: 3A; | 4、 Motor speed: 1400r/min; |
| 5、 Running speed : 12m/min; | 6、 Suitable door weight: 400-2000kg |
| 7、 Environment temperature: $-25^{\circ}\text{C}\sim+55^{\circ}\text{C}$ | 8、 Motor net weight: 12.7kg——16.7kg |

Installation of reserved power cord with 1 square millimeter or 6 cores (or 1.5 square 2 core)

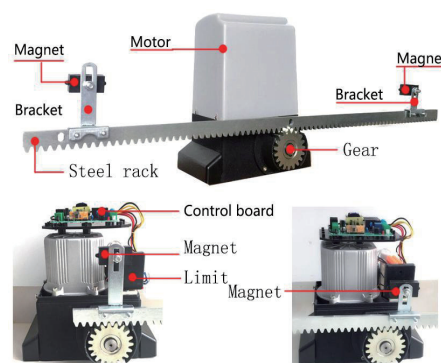
Metal base plate mounting (Fig 1)



(Fig 1)

SLIDING GATE OPENER

Install the limit magnet or spring limit at proper position on the steel rack (Fig 2)



(Fig 2)



(Fig 2)

Move the gate manually to the open limit and close limit, mark the points on the rack, then, fix the limit stoppers or magnets at the limit points on the rack

Electrical mode turn to manual opening (Fig 3)

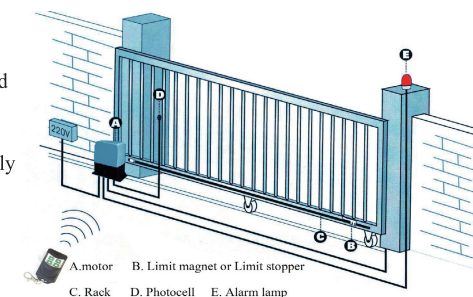
When the power failure, use keys to release the clutch, push door manually.(must to open the release clutch to 90 degree.



(Fig 3)

Example of a sliding gate operator installed (Fig 4)

- * Before using the machine, check power supply, grounding, voltage, etc.
- * Check whether it is connected according to the demand of wiring diagram.
- * The gate should be pulled easily and smoothly manually when the worm gears are released.
- * The worm gears will be coupled before power on.
- * The product must be installed by professional person



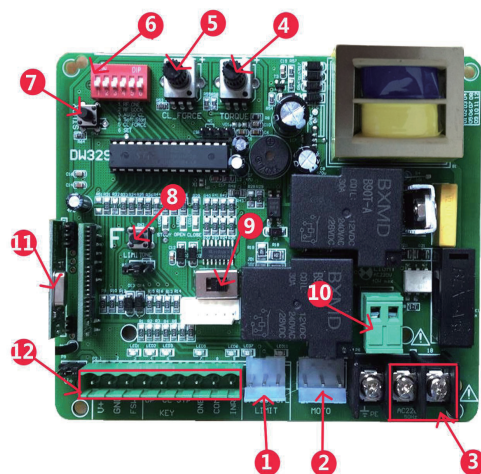
(Fig 4)

T329 Intelligent sliding door controller is my company's latest development , A product with her adopted Advanced MCU control, so it is more stable and more safe and more reliable.

Product technical parameters

Input voltage: ~ 220v + - /10% Maximum output
Current: 5A fuse Selection:AC220V 10A
Remote control distance : open land > 30 meters

Control panel interface and function use



1. **Limit line** (O.P COM C.L)
2. **Motor line** (L1 COM L2)
3. **Supply power** :AC220V + - 10%
4. **TORQUE** adjust torque
5. **CL_ FORCE** adjust force
6. **FUNCTION SET** B1RF ONE-single button on remote B2RF LOCK - remote manual lock function B3AUTO CL- automatic shutdown function B4Soft start function B5CL_FORCE - can close the door blocked functions B6SET

7. Remote studying key
8. F key is manual cycling switch , OPEN-STOP-CLOSE
9. Adjust the motor direction turn left - turn right
10. AC220V light interface
11. Receiving module of remote
12. Optional accessories terminal , manual button , infrared sensor, keypad access system and so on .

The remote control method of use:

The control box can match most learning code remote control 300.more than the number,will not be able to add the remote control. Can only add delete all the remote control .

A. Remote control keyboard operation: press the direction close (open) button on the remote control can make the motor movement, press the stop button , the motor stop or solutions for remote control key lock.

B. Manual keyboard lock : when the B2 to ON when press the lock button ON the Remote control , the control box into the locked position (ON the front panel lights stop flashing) namely only locking the manual button and remote control the direction key ,can press stop key ON the remote control to

unlock the stop light to stop flashing ON(panel: Locked in the control box, must after press stop on the remote control to unlock, can we make the direction key on the remote control and controller on the manual for normal use , Even if a power outage before power on or in a locked state.

C. Remote control: according to the study key on the controller 1 second, indicator light closed, hold any a button on the remote control or continuous press any a key on the remote control twice. Have a reminder setting , remote control can be normal use , Can use the same method to study the second , third, etc. Fixed code controller to increase transmitter with only the first remote password welding good.

D. Remote password to delete: hold down the study key for about eight seconds, heard a loud voice, you can let go of learning key , removing previous learned remote control.

External connection manually:

External single bond manually: can choose the doorbell switch, in a single bond and public two terminal . Single bond manual for circular manner open - stop - closed - stop.

External on open -stop-close three key manually: Connect the three interface on the control board KEY (OP-CL-STP)

Swipe to open the door: shut the door in place or close the door, the terminal opened and a signal through public end, motor do open the door. Note: when using a credit card function, the controller can set up automatic shutdown function, so that the doors after the credit card, delay shutdown (details please refer to the automatic shutdown set), but for the sake of safety, you must install infrared correlation device, in order to prevent the clip into things when automatic shutdown.

To sense function: after open the door in place (trip), to sense a signal through the client and the public end, motor performs automatic shutdown.

Connection:

Stroke can choose mechanical or dry reed pipe way to travel. Public line in COM, the course line connected into O.P (open the door limit) and C.L closed (limit)

Electrical wiring:

Motor wiring must according to the main picture connection, must connect PCB COM public line,otherwise you will appear in single direction of fault. Doors right direction when you can dial the motor switch, don't change the motor line.

Automatic shutdown function set:

(FIRST look out Red 6 FUNCTION SET ON THE CONTROL PANEL)

The user can set automatic shutdown function as required. When B3 received ON, automatic shutdown function; When in OFF, said disable automatic shutdown function. When can set

automatic shutdown function makes door to open the door to the travel, indicator light to 1 hz flashing. When to set a time controller performs automatic closing operation.

Automatic shutdown time setting:

Must put B6 and B3 ON, then press the function key F (SN1), each time you press the add 1 s, how many seconds according to how many times, after the set must put B6 OFF, and a voice prompt, automatic shutdown time is set.

Motor protection time setting:

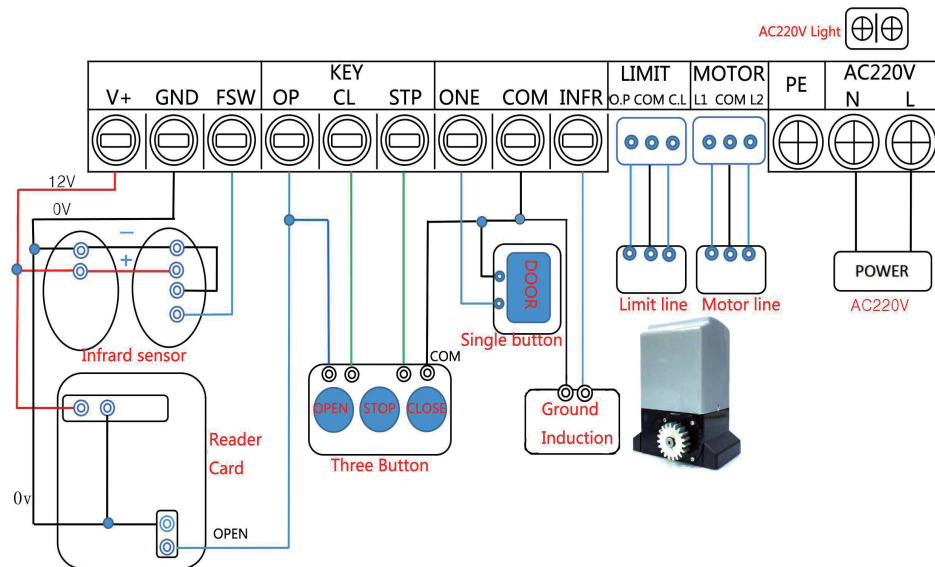
This function must be in B3 in the OFF position, B6 in ON position, such as press F, at this time will destroy the lights, if you don't need electricity into this function)

When the door installed (travel) after corresponding stopped, the door is not in stroke position, after power off for 5 seconds, hold the function keys F immediately more than 5 seconds, Release the key F after the door action, the door experience to open the door to the first trip, and then automatically shut down action, close the door, stop after the trip, then finish the motor protection time Settings, finally must get B6 to the OFF position

Motor blocked return functions :

(B5 must go to the ON position) when the motor at the closing action, door meet obstacles to return to action. Can meet the size of the resistance by CL_FORCE blocked adjust potentiometer adjustment, reduce counterclockwise, clockwise. Efforts to adjust potentiometer can adjust the magnitude of the motor to rebound function more obvious

DIAGRAM



Note:

- 1, the control box of working voltage for $\sim 220 + / - 10\%$, do not pick up the 380 v voltage.
- 2, buried in the ground use coarser double insulation wire, travel switch three core shielding layer should be good grounding, there shall be no joint in the middle. Wire to set into the PVC tube or pipe, waterproof and moistureproof processing.
- 3, when leaving the factory, motor protection set for 90 seconds. Transmitter using DC12V, 27A battery, the service life of the year, a transmitter do not be affected with damp be affected with damp, collision, if you would like to change password, please refer to the password set.
- 4, if the remote control distance is too short, please check whether the host installation location near covered with metal or metal.
- 5, the control box and line amateurs do not install, such as personal safety problems, the company shall not be held responsible.
- 6, the control box if there is any quality problem, please put the control box to the agent processing, such as user repair itself, the company is not responsible for the user to fix the damage caused by himself.

Simple fault inspection and eliminate:

I、 when the control box to the motor doesn't work, first distinguish control box or outer line fault.

Discriminant method is: through the controller inside the light emitting light is about judgment of failure parts.

Outside line common faults:

- 1, the line is broken or poor contact, can use a multimeter to check.
- 2, wet leakage, replaceable wire.

II、 The control box burn insurance namely after the power is connected, please check whether the power grid voltage is too high or misconnection 380 v.

III、 when your remote control failure, but try to make launchers, otherwise please check transmitter for electricity.

IV、 remote control distance nearly:

- 1, remote control in open > 30 meters, because the radio waves are greatly influenced by the weather, therefore, in the rain, fog, wind, severe weather conditions such as remote control distance is slightly lower, this is a normal phenomenon.
- 2, old batteries, also can make remote control distance nearly, can try to replace new battery.